

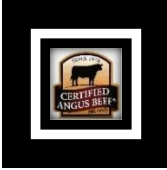
2500 Griffin Road (½ Mile West of I-95 on Griffin)
 Ft. Lauderdale, FL 33312
 954-989-2500



HOURS:
Monday thru Saturday
Opens at 10:00 AM

*Our beef quality is the highest end of
 USDA Certified Angus Beef Choice and
 trimmed close enough to be placed
 directly on the grill.*

MENU SELECTIONS:



FRESH CUT

- 6 oz Filet.....\$12
- 8 oz Filet..... \$16
- 10 oz Filet..... \$18
- 10 oz Strip..... \$12
- 14 oz Strip..... \$14
- 12 oz Boneless Ribeye.....\$16
- Fresh Ground Beef 1.5 lb.....\$6
- Beef Kabob w/Fresh Veg.....\$9
- Chicken Kabob w/Fresh Veg... \$6
- Vegetable Kabob.....\$3
- Outside Skirt Steak.(1 lb).....\$29
- Tomahawk 32 oz.....\$57

FROZEN

- Lamb Racks (2) 12-14 oz.....\$39
- Chicken Breast-6 oz.....\$3
- Chicken Breast 10 lb. Bag.....\$60
- SHRIMP-Large 1 lb. Bag.....\$13
- Duroc Pork Chop-12 oz. bone-in.....\$11
- Salmon 8 oz.....\$9
- Veal Cutlets 2 5 oz.....\$12
- Top Sirloin 8 oz.....\$8
- Mahi 8oz.....\$8
- Red Grouper 8-10 oz.....\$10
- Baby Back Ribs 1.5-2 lb.....\$12

READY TO COOK

- Gourmet Burgers 7oz.....\$4
- Bacon & Crispy Onion
- Jalapeño Cheddar
- Mushroom Swiss
- Mac N Cheese "Steakhouse".....\$6
- (frozen) (9 oz.)
- Stuffed Shrimp w/Seafood stuffing
- (frozen).....6-\$18, 12-\$33
- Crab Cakes 2-4 oz..... \$22
- (frozen)

TROPICAL ACRES BUTCHER SHOP

MEMORIAL DAY SPECIAL

2-RACKS BABY BACK RIBS
4-CHICKEN BREASTS
1 LB. SHRIMP

CALL: 954-989-2500 TO ORDER

ONLY \$45

HURRY WHILE SUPPLIES LAST!

HOUSE-MADE SPECIALTIES

- Creamy Garlic "House" Dressing 16 oz...\$8
- 10" Cheesecake..... \$22/Slice-\$5
- Key Lime Pie.....\$16/Slice-\$4
- Creamed Spinach (8 oz.).....\$5
- Onion Soup.....\$6
- Steak Rub Spice.....\$3

American Wagyu

TROPICAL ACRES BUTCHER SHOP

boneless

12 OZ RIBEYE/DELMONICO-NOW ONLY \$42

954-989-2500

available while supplies last

CUSTOM CUTS:

Ribeye - \$1.50/oz.

Filet - \$2.10/oz.

Strips - \$1.25/oz.

Rib Roast - \$24/lb.(3 lb. or larger)

Whole Tenderloin \$29/lb.(Average 4-5)

Availability & pricing as of 5/22/2023



Place your order in advance at 954-989-2500 or:

