

2500 Griffin Road (½ Mile West of I-95 on Griffin)  
 Ft. Lauderdale, FL 33312  
 954-989-2500



**HOURS:**  
**Monday thru Saturday**  
**Opens at 10:00 AM**

## MENU SELECTIONS:

### FRESH CUT

6 oz Filet.....\$12  
 8 oz Filet..... \$16  
 10 oz Filet..... \$18  
 10 oz Strip..... \$11  
 14 oz Strip..... \$14  
 12 oz Boneless Ribeye.....\$16  
 Fresh Ground Beef 1 ½#.....\$6  
 Beef Kabob w/Fresh Veg.....\$9  
 Chicken Kabob w/Fresh Veg... \$6  
 Vegetable Kabob.....\$3  
 Skirt Steak (outside) 1 lb.....\$23

### FROZEN

Lamb Racks (2) 12-14 oz.....\$39  
 Chicken Breast-6 oz.....\$3  
 Chicken Breast 10# Bag.....\$60  
 SHRIMP-Large 1# Bag.....\$13  
 Duroc Pork Chop-12 oz. bone-in.....\$11  
 Salmon 8 oz.....\$9  
 Veal Cutlets 2 5 oz.....\$12  
 Kansas City Strip-16 oz.(dry aged)....\$27  
 Top Sirloin 8oz.....\$8  
 Red Grouper 8-10 oz.....\$10  
 Mahi 8oz.....\$8

### READY TO COOK

Gourmet Burgers 7oz.....\$4  
 -Bacon & Crispy Onion  
 -Jalapeño Cheddar  
 -Mushroom Swiss  
 Mac N Cheese "Steakhouse".....\$6  
 (frozen) (9 oz.)  
 Stuffed Shrimp w/Seafood stuffing  
 (frozen).....6-\$18, 12-\$33  
 Crab Cakes 2-4 oz..... \$22  
 (frozen)

### HOUSE-MADE SPECIALTIES

Creamy Garlic "House" Dressing 16 oz...\$8  
 10" Cheesecake..... \$22/Slice-\$5  
 Key Lime Pie.....\$16/Slice-\$4  
 Creamed Spinach.(8 oz.)..... \$5  
 Onion Soup.....\$6

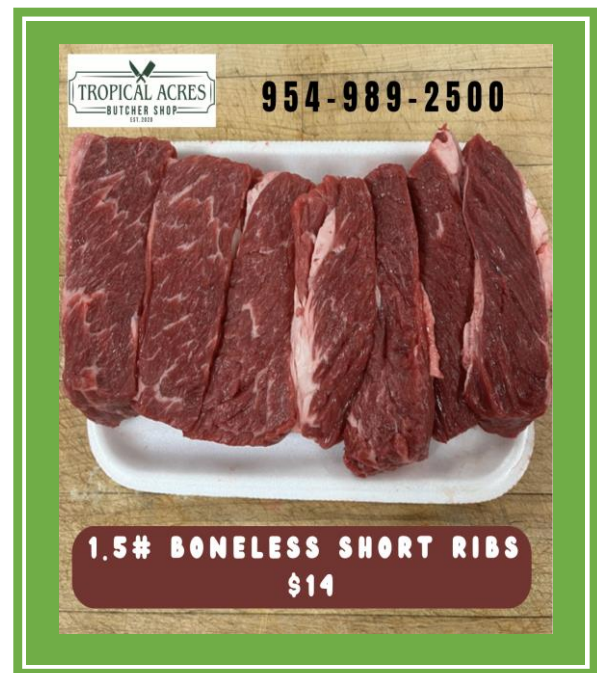


*Our beef quality is the highest end of  
 USDA Certified Angus Beef Choice  
 and trimmed close enough to be  
 placed directly on the grill.*

### CUSTOM CUTS:

Ribeye - \$1.50/oz.  
 Filet - \$2.10/oz.  
 Strips - \$1.25/oz.  
 Rib Roast - \$24/lb.  
 (3 lb. or larger)

**Whole Tenderloin \$29/lb.(Average 4-5 lbs.)**



Availability & pricing as of 3/20/2023



Place your order in advance at 954-989-2500 or:

